

Internal Gear Pump Type EIPS2-16 144 / EIPS2-16 644 Replacement Pump for Unimog and MB-Truck



EIPS2

Features

The original ECKERLE Internal Gear Pump, Type EIPS2-16 144 is the exchangeable internal gear pump for use in the Unimog and in the MB Truck.

The permissible permanent pressure provides with 230 bar more pressure than the original pumps. This means further power reserves for your vehicle.

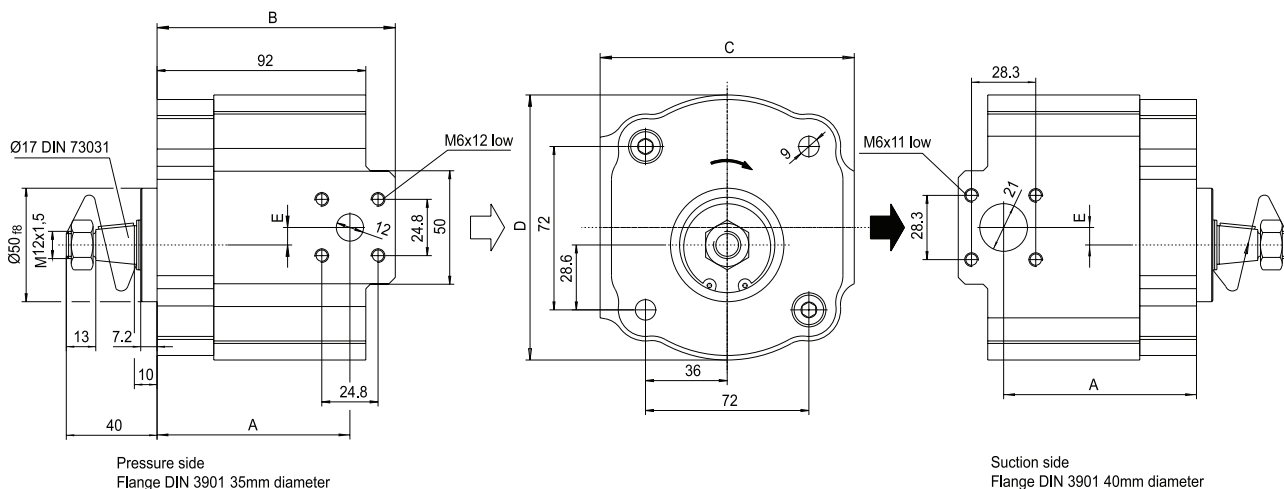
The ECKERLE EIPS2-16 144 pump is only available as 16 cm³/U. The replacement of the 13 cm³/U pumps with the 16 cm³/U pump is generally unproblematic. The counterclockwise rotating pump has the item reference number . . .644.



Technical Data

| | | | |
|--|----------|--|-------|
| Spec. volume V_{th} [cm ³ /U] | 16 | Max. Media temperature [°C] | 120 |
| Permanent operating pressure [bar] | 230 | Min. Media temperature [°C] | -40 |
| Peak operating pressure [bar] max. 10sec 15% ED | 275 | Max. Ambient temperature [°C] | 80 |
| Rated rpm 1/min | 600-3600 | Min. Ambient temperature [°C] | -40 |
| Operating viscosity [mm ² /s] | 10-300 | Start viscosity [mm ² /s] | 2.000 |
| Operating temperature [°C] | -20+100 | Mass approx. [kg] | 4,5 |
| Operating media corresponding to DIN 51 524 part 1/2 | HL-HLP | Pollution grade according to NAS 1638 class: | 9 |

Dimensions of clockwise rotating Pump EIPS2-16 144



available at:



